

Solutions Selling

Going beyond products ...

Carbon arms

Why Use Reaction Arms

in the working environment there are several risk factors capable of inducing micro repeated trauma of the upper limb which can give rise to various diseases and disorders including the most common carpal tunnel syndrome. Ingersoll Rand offers a range of arms capable of preventing these problems, because the reaction force produced by the tool during tightening is absorbed completely from carbon fiber instead of affecting the operator limb and reduces the possible negative effects caused by vibrations.

Using a carbon fibre reaction arm the user can achieve:

- A reduction of repetitive stress of the operator limb;
- High precision in tightening;
- Maximizing productivity;
- Drastic reduction of carried loads

BRT 10 Torque Arms (Max torque 10Nm)

Use

Torque reaction (T) is perpendicular to arm axis

Included

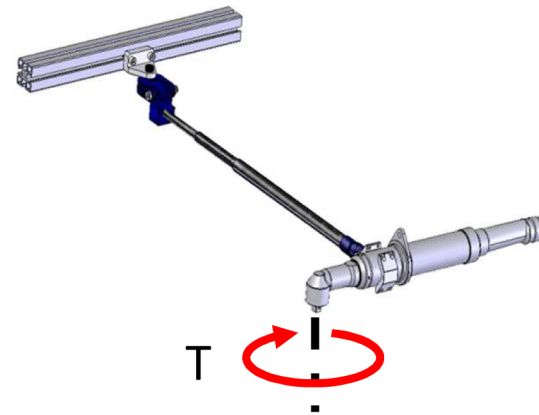
Torque arm with wall attachment
Tool holder

Not included

Balancer

Strengths

- Light and cost effective design
- Tool holder included
- Made with high-module carbon fiber
- High precision machining



Model	Torque max		L min		L max		ω	Weight
	(Nm)	(f.lb)	(mm)	(in)	(mm)	(in)		
BRT10 1000	10	7.38	495	19,49	1105	43,50	90	395
BRT10 1500	10	7.38	665	26,18	1605	63,19	90	451

BRT Torque Arms (Max torque 15 ÷ 220Nm)

Use:

Torque reaction (T) is perpendicular to arm axis

Included:

Torque arm with wall attachment

Not included:

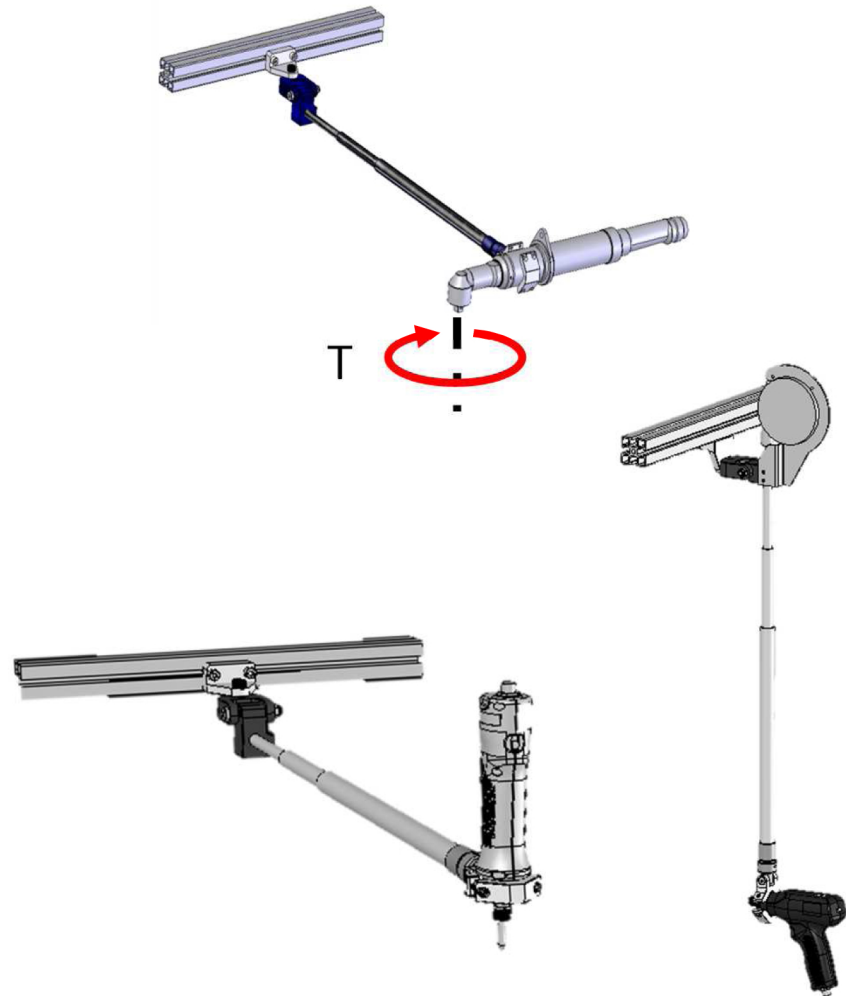
Tool holder

Balancer

Option: internal balancer kit

Strengths:

- Light and cost effective design
- High-module carbon fibre construction



BRT Torque Arms

Model range

(Max torque 15 ÷ 220Nm)

Model	Torque max		L min		L max		ω	Weight
	(Nm)	(f.lb)	(mm)	(in)	(mm)	(in)		
BRT15 1000	15	11.06	486	19,13	1066	41,97	60	668
BRT15 1500	15	11.06	646	25,43	1556	61,26	60	727
BRT15 2000	15	11.06	806	31,73	2046	80,55	60	786
BRT40 1000	40	29.50	486	19,13	1066	41,97	50	733
BRT40 1500	40	29.50	646	25,43	1556	61,26	50	820
BRT40 2000	40	29.50	806	31,73	2046	80,55	50	913
BRT40 2500	40	29.50	986	38,82	2576	101,42	50	999
BRT80 1500	80	59.00	658	25,91	1586	62,44	40	930
BRT80 2000	80	59.00	828	32,60	2078	81,81	40	1028
BRT80 2500	80	59.00	998	39,29	2588	101,89	40	1127
BRT150 1500	150	110.63	668	26,30	1578	62,13	30	1395
BRT150 2000	150	110.63	838	32,99	1918	75,51	30	1548
BRT150 2500	150	110.63	1003	39,49	2248	88,50	30	1720
BRT220 1500	220	162.26	668	26,30	1578	62,13	20	1585
BRT220 2000	220	162.26	838	32,99	2088	82,20	20	1775
BRT220 2500	220	162.26	1003	39,49	2588	101,89	20	1995

Proper order configuration
BRT with standard clamp



+



BRT-V Torque Arms (Max torque 15 ÷ 220Nm)

Use:

Torque reaction (T) is perpendicular to arm axis

Included:

Torque arm with wall attachment

Not included:

Tool holder

Balancer kit

Strengths:

- Designed for 3 types of balancer, with weight range 0,4 ÷ 14Kg
- Specific design for vertical installation only, with in-line balancer fixation



BRT-V Torque Arms

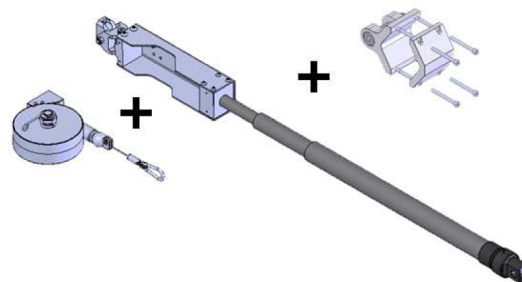
Model range

(Max torque 15 ÷ 220Nm)

Model	Max torque		L min		L max		w
	(Nm)	(f.lb)	(mm)	(in)	(mm)	(in)	(deg)
BRT-V 15 1000	15	11.06	777	30,59	1345	52,95	60
BRT-V 15 1500	15	11.06	937	36,89	1835	72,24	60
BRT-V 15 2000	15	11.06	1097	43,19	2325	91,53	60
BRT-V 40 1000	40	29.50	777	30,59	1345	52,95	50
BRT-V 40 1500	40	29.50	937	36,89	1835	72,24	50
BRT-V 40 2000	40	29.50	1097	43,19	2325	91,53	50
BRT-V 40 2500	40	29.50	1277	50,27	2855	112,4	50
BRT-V 80 1500	80	59.00	949	37,36	1865	73,42	40
BRT-V 80 2000	80	59.00	1119	40,05	2357	92,79	40
BRT-V 80 2500	80	59.00	1289	50,75	2867	112,87	40
BRT-V 150 1500	150	110.63	960	37,5	1957,5	77,07	30
BRT-V 150 2000	150	110.63	1129	44,45	2357	92,79	30
BRT-V 150 2500	150	110.63	1294	50,94	2862	112,68	30
BRT-V 220 1500	220	162.26	960	37,5	1957,5	77,07	20
BRT-V 220 2000	220	162.26	1129	44,45	2357	92,79	20
BRT-V 220 2500	220	162.26	1294	50,94	2867	112,87	20

Proper order configuration

BRT-V arm with balancer kit and base clamp



BRV Torque Arms (Max torque 15 ÷ 80Nm)

Use:

Torque reaction (T) is parallel to arm axis. Anti-rotation design.

Included:

Torque arm with wall attachment

Not included:

Tool holder

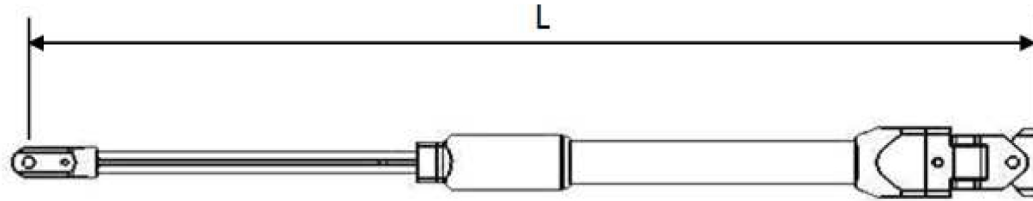
Balancer kit

Strengths:

- Special “torsion” carbon fibre design
- Smooth sliding with ball splined shaft



BRV Torque Arms Model range (Max torque 15 ÷ 80Nm)



Model	Max torque		L mx		Stroke	
	(Nm)	(f.lb)	(mm)	(in)	(mm)	(in)
BRV15-600/150	15	11.06	600	23.62	150	5.90
BRV15-800/300	15	11.06	800	31.49	300	11.81
BRV40-600/150	40	29.50	600	23.62	150	5.90
BRV40-850/300	40	29.50	850	33.46	300	11.81
BRV40-1500/600	40	29.50	1500	59.05	600	23.62
BRV80-900/300	80	59.00	900	35.43	300	11.81
BRV80-1500/600	80	59.00	1500	59.05	600	23.62
BRV80-2100/900	80	59.00	2100	82.67	900	35.43

Proper order configuration

BRV arm with balancer kit and straight tool clamp



Tool Holders THB series

Use:

Universal tool clamping

Included:

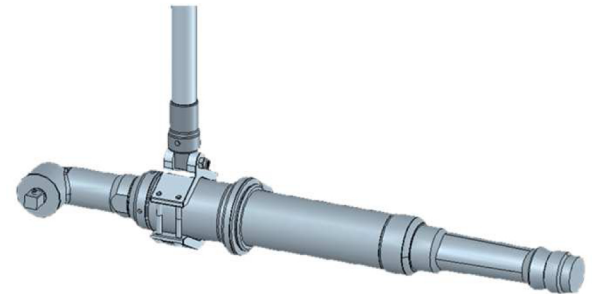
Tool holder with screws

Not included:

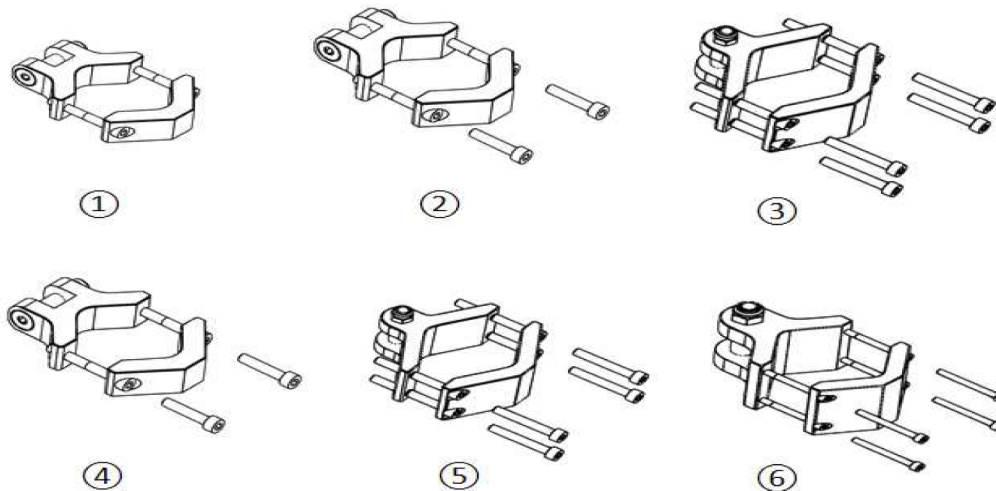
Torque arm.

Strengths:

Designed for BRT/ BRT-V arms



Tool Holders Model range THB series



Ref.	Tool grip (mm)		Description	Application
	Ømin	Ømax		
1	26,5	44	Base tool holder	BRT 10 (*)
2	27	45	Base tool holder 2 screws	BRT 15
3	27	45	Base tool holder 4 screws	BRT 15
4	30	60	Base tool holder 2 screws	BRT 40-80
5	30	60	Base tool holder 4 screws	BRT 40-80
6	40	70	Base tool holder	BRT 150-220

(*) included into arm as standard

Tool Holders THBI series

Use:

Universal tool clamping with multiple position

Included:

Components according to table

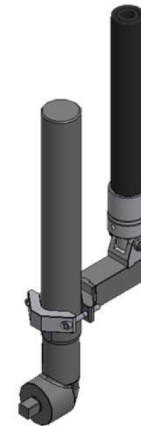
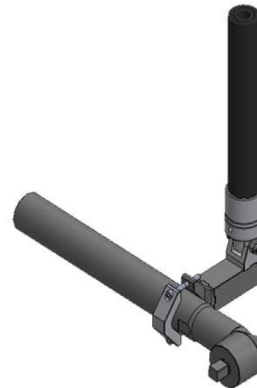
Not included:

Torque arm.

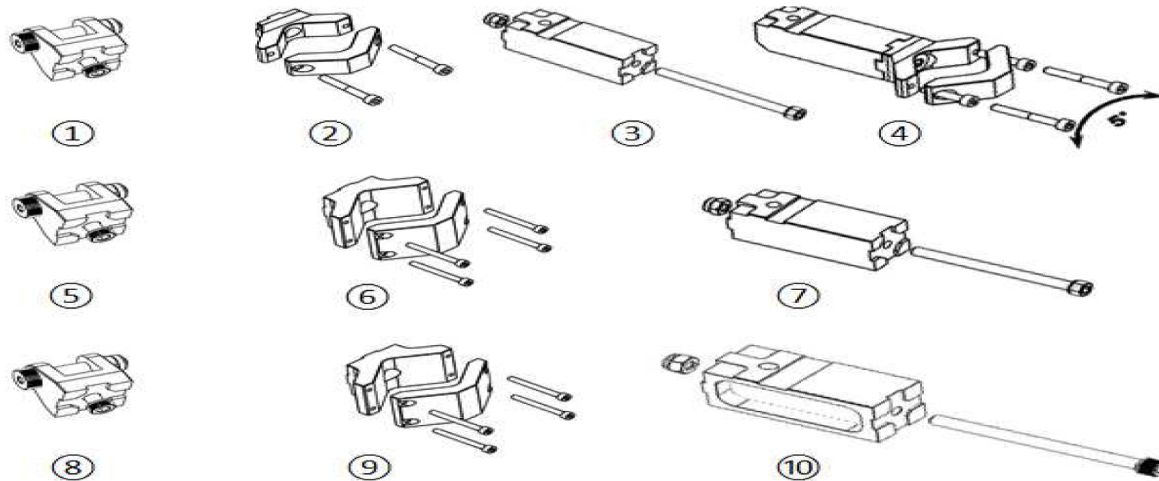
Strengths:

Designed for BRT/ BRT-V arms

Multiple configuration of tool holder



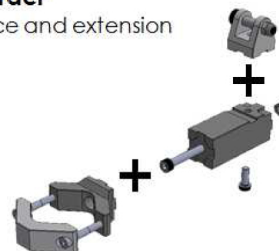
Tool Holders Model range THBI series



Ref.	Tool grip (mm)		Description	Application
	Ømin	Ømax		
1	n/a	n/a	Multi-position tool holder interface	BRT 15
2	27	45	Multi-position tool holder	BRT 15
3	n/a	n/a	Extension L=90mm	BRT 15
4	27	45	Multi-pos. T.H. with 5° freedom X-axis	BRT 15
5	n/a	n/a	Multi-position tool holder interface	BRT 40-80
6	27	45	Multi-position tool holder	BRT 40-80
7	n/a	n/a	Extension L= 120 mm	BRT 40-80
8	n/a	n/a	Multi-position tool holder interface	BRT 150-220
9	40	70	Multi-position tool holder	BRT 150-220
10	n/a	n/a	Extension L=120mm	BRT 150-220

Example of product order

Tool clamp with interface and extension



Tool Holders TH-BRV series

Use:

Universal tool clamping for anti- rotation arms

Included:

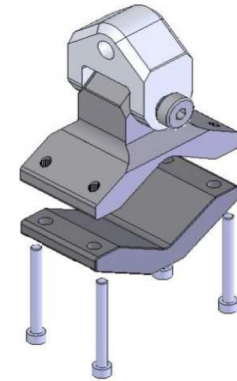
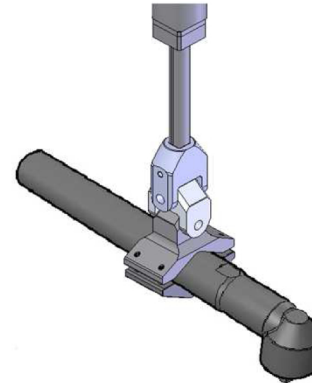
Tool holder with screws

Not included:

Torque arm.

Strengths:

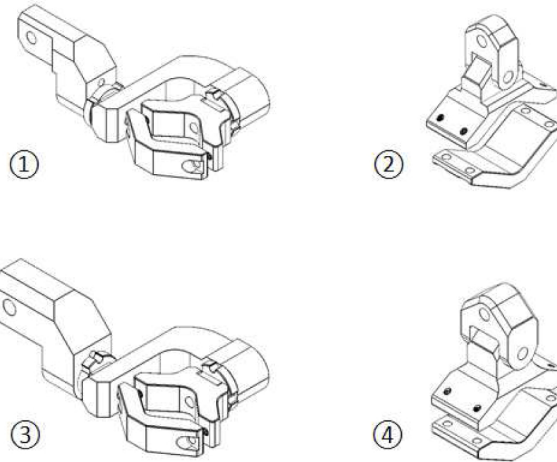
Designed for BRV arms



Tool Holders

Model range

TH-BRV series



Ref.	Tool grip (mm)		Grip width (mm)	Description	Application
	Ømin	Ømax			
1	27	45	18	Straight tool holder	BRV 15
2	30	60	33.5	Angle tool holder	BRV 15
3	27	45	18	Straight tool holder	BRV 40-80
4	31	65	47	Angle tool holder	BRV 40-80

Tool Holders

Swivel THR series

Use:

Tool clamping with rotation on tool axis

Included:

Tool holder body with screws

Tool adaptor. To be ordered by size

Not included:

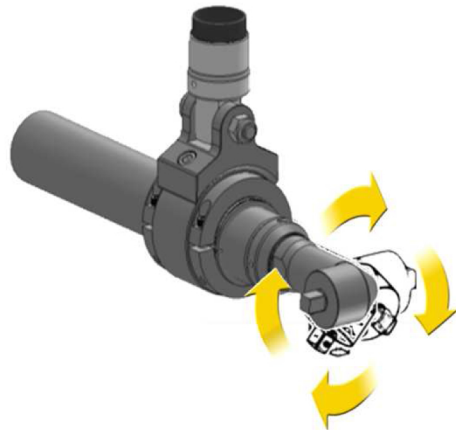
Tool holder Interface. See table

Torque arm

Strengths:

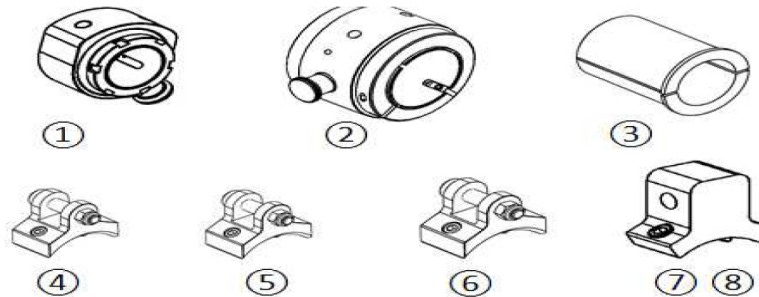
Designed for all BNP torque arms

Allows multiple position tightening



Tool Holders

Swivel THR series



Ref.	Tool grip (mm)		Description	Application
	Ømin	Ømax		
1	20	35	Swivel tool holder	BRT (all), BRT 15÷80 (**)
2	40	55	Swivel tool holder	BRT (all) 15÷150 (***), BRV 15÷80
3	30 (*)	57 (*)	Adaptor	All arms
4	n/a	n/a	Swivel tool holder interface	BRT 15
5	n/a	n/a	Swivel tool holder interface	BRT 40-80
6	n/a	n/a	Swivel tool holder interface	BRT150
7	n/a	n/a	Swivel tool holder interface	BRV15
8	n/a	n/a	Swivel tool holder interface	BRV40-80

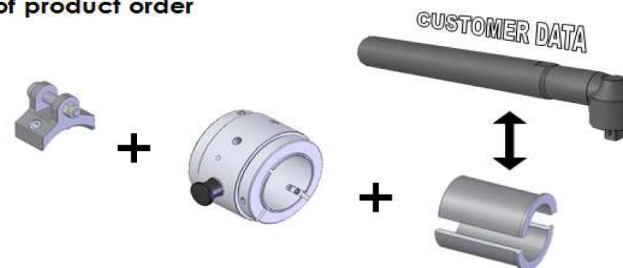
(*): provided to measure, within the diameter limits indicated for each model of tool-holder

(**): max torque 80Nm

(***): max torque 150Nm

IMPORTANT: customer must provide tool grip diameter when places the order. Tool adaptor will be supplied according to above dimension.

Example of product order





KAVON CZ s.r.o.

Sídlo společnosti:

Smilova 777
530 02 Pardubice

Provozovna:

Medlešice 139
538 31 Chrudim

info@kavon.cz

www.kavon.cz

Pobočky:

Praha

Geologická 2,
152 00 Praha 5
tel./fax.: 222 741 604
mobil: 603 848 716
email: skridlovsky@kavon.cz

Mladá Boleslav

Staré Město 85
293 01 Mladá Boleslav
tel.: 326 322 158
mobil: 736 753 975
email: kavon.mb@kavon.cz

Brno

Hviezdoslavova 55
627 00 Brno-Slatina
tel.: 548 213 068
mobil: 603 893 537
email: simko@kavon.cz